



飛利克斯科技有限公司
Felix Technology Ltd.

CONNECTORS AND CABLE ASSEMBLIES FOR E-BIKE





飛利克斯科技有限公司

Felix Technology Ltd.



Light Electric Vehicle Waterproof Hybrid Cable

12005-TW1203 and 12005-TW1205 series



12005-TW1203 series contains 2 power pins and an option for 4 signal pins or 5 signal pins. The 5th pin is designed as a charging pin for certain e-bikes that wish to use this as a charging cable with up to 5A current.

12005-TW1205 series contains 3 power pins and an option for 6 signal pins or 7 signal pins. The mating surface for both series is an irregular hexagon shape which makes it easier to mate and un-mate compared to the round shape. Waterproof level at IP67 for both series.

Application

Motor System Connection in E-mobility, Outdoor Lighting System, and Industrial Robots

Light Electric Vehicle Waterproof Cable

12005-TW1015 series



3+3 or 3+6 power and signal pins respectively. This series adds an additional 3+7 power signal pin design and also adds motor thermal sensing. This features easy installation and the gold-plated surface allows for greater current transfer.

Application

Motor System Connection in E-mobility, Outdoor Lighting System, and Industrial Robotic

PLEASE CONSULT US FOR ANY DETAIL DRAWING AND SPECIFICATION

Felix Technology Ltd

TEL : +886-2-2958-8559 / FAX : +886-2-2958-8667

Skype : asd123001320002





飛利克斯科技有限公司

Felix Technology Ltd.



Light Electric Vehicle Waterproof Cable

12005-TW0601 and 12005-TW0603 series



12005-TW0601 is specifically a 6pin connector with 2A max current per pin.

12005-TW0603 is a 2 to 5 pin connector that has 2 pin with 5A max current that is commonly used as charging cables.

12005-TW4002 series



12005-TW4002 number of pins ranges is 2 to 6 pin. The design features only a 6mm diameter in mating surface. Easy installation with foolproof design for end customers.

Application in E-Bike

Driver system, console system, the front and back light, the GPS system, display POD, throttle system, brake system, and torque sensor. Other applications are suitable depending on customer use.

PLEASE CONSULT US FOR ANY DETAIL DRAWING AND SPECIFICATION

Felix Technology Ltd

TEL : +886-2-2958-8559 / FAX : +886-2-2958-8667

Skype : asd123001320002





飛利克斯科技有限公司
Felix Technology Ltd.



Light Electric Vehicle Waterproof Cable

12005-TW0704 series



The design features only a 35mm meter mating length with a total of 6 functional pins (2 power pins on top and 4 signal pins at the bottom). Tighter spacing and flexibility in cable routing has become more and more critical in e-bike design and assembly. With this connector, you can easily assemble the cable harness in tight spaces and loop through extreme angles. Waterproof level at IPX7 with gold plating finish allowing a greater threshold for current transmission.

Application in E-Bike

Driver system and sensor system. Other applications are suitable depending on customer use.

12005-TW2051 and 12005-TW2052 series



2.0mm pitch wire-to-wire and wire-to-board waterproof connectors. Each connector has a waterproof silicone ring on the back and contact surface, as well as a snap-on design when in contact. Therefore, it has an IP67 waterproof rating. This series includes Wire-to-wire and wire-to-board (90 degree and 180 degree) designs.

Application

Sensor system of E-mobility, outdoor lighting system and display system.

PLEASE CONSULT US FOR ANY DETAIL DRAWING AND SPECIFICATION

Felix Technology Ltd

TEL : +886-2-2958-8559 / FAX : +886-2-2958-8667

Skype : asd123001320002





飛利克斯科技有限公司

Felix Technology Ltd.



Light Electric Vehicle Waterproof Power Cable

12005-TW1003 series



12005-TW1003 is 2 pin power connection cable. The design features easy installation and a lock to increase retention strength. Waterproof level at IP67. The gold plate finish allows a greater threshold for current transmission of up to 20A per pin.

Application in E-Bike

Battery pack to the controller system

12005-TW2561 series



12005-TW2561 has 2 pin power supply and 5 pin signal. The number of pins can be reduced according to customer needs. This product features IP67 waterproof rating, fool-proof contact mechanism, and can be designed as a charging cable.

Application

Battery pack of E-mobility, outdoor lighting system and industrial robots.

PLEASE CONSULT US FOR ANY DETAIL DRAWING AND SPECIFICATION

Felix Technology Ltd

TEL : +886-2-2958-8559 / FAX : +886-2-2958-8667

Skype : asd123001320002





飛利克斯科技有限公司

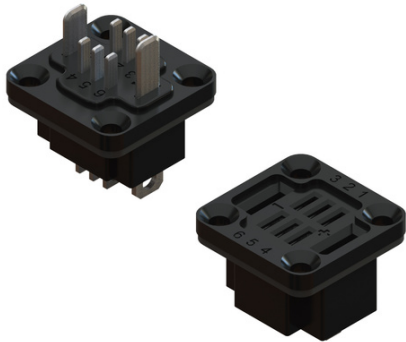
Felix Technology Ltd.



Light Electric Vehicle Waterproof Connector

Waterproof cable is a standard power connector designed for e-bike and e-scooter battery cases. There are 2 power pins and 6 signal pins respectively. The number of pins can be reduced according to customer needs.

12005-TW2582 series



12005-TW2801 series



Application

E-mobility, outdoor lighting system and display System.

PLEASE CONSULT US FOR ANY DETAIL DRAWING AND SPECIFICATION
Felix Technology Ltd
TEL : +886-2-2958-8559 / FAX : +886-2-2958-8667
Skype : asd123001320002

